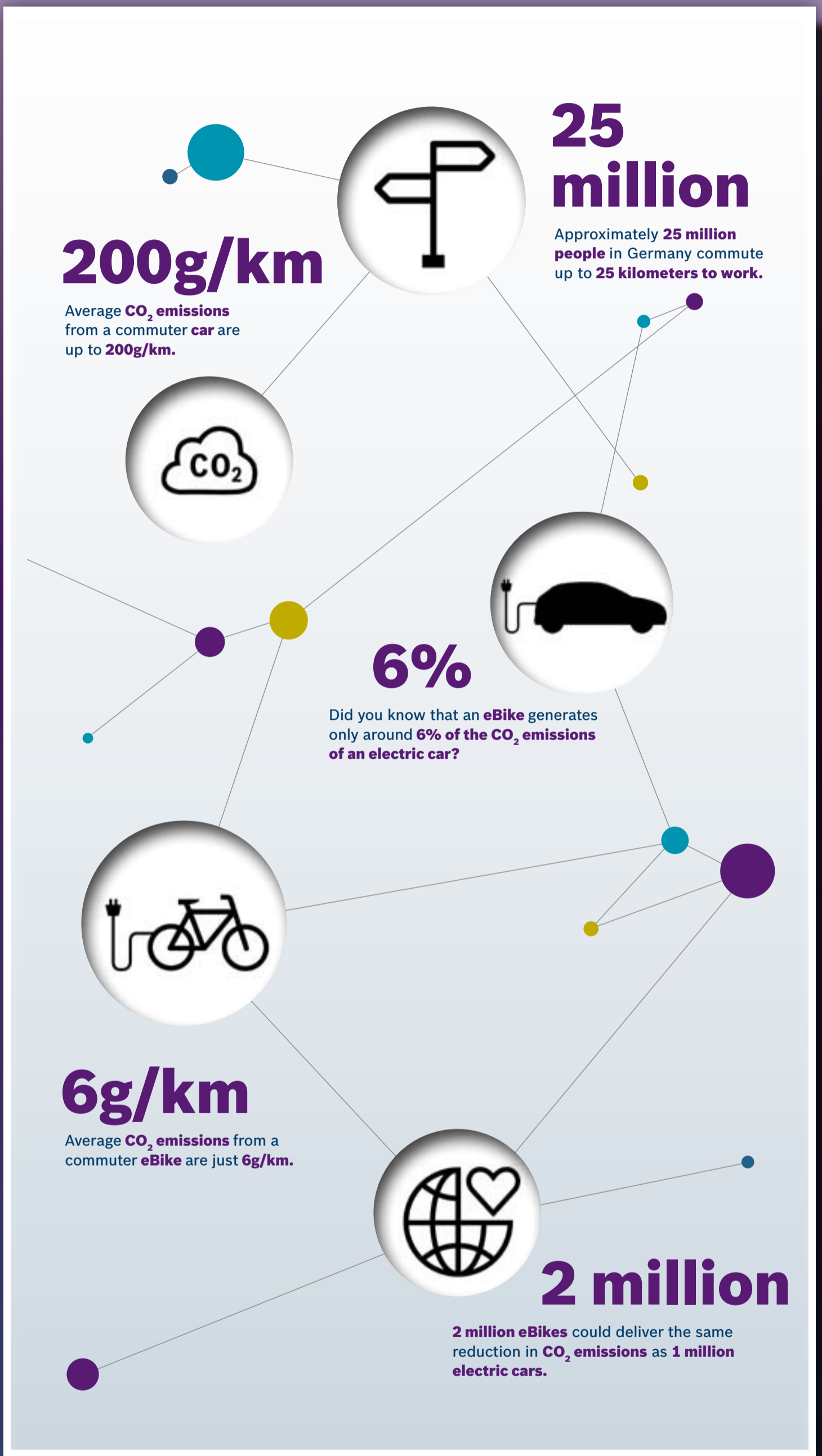


What if the future brings a company eBike for everyone?

New German tax legislation puts a new spin on establishing the eBike as a central means of transportation: Company eBikes are treated the same as company cars as they are as well tax-deductible.



blog.bosch-si.com



Kristina Flüchter, researcher and PhD candidate at the Bosch IoT Lab, bases her eBike leasing project on the above mentioned five assumptions.

Sources: Verkehrsclub Deutschland (VCD), Statistisches Bundesamt, Agentur für Erneuerbare Energien, personal research